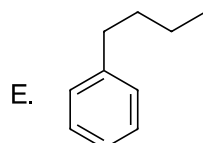
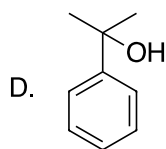
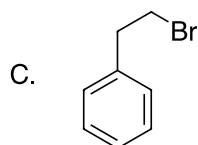
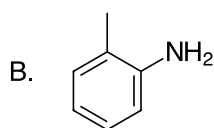
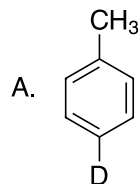
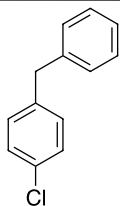


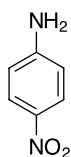
- 1) Starting from benzene or toluene, show how you would synthesize each of the following:



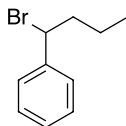
F.



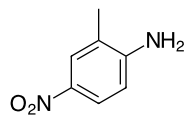
G.



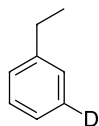
H.



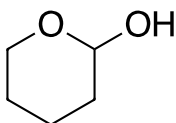
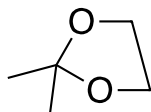
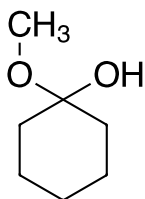
I.



J.



- 2) Provide the structure of the semicarbazone that results from the reaction of semicarbazide and benzophenone.
- 3) Provide the structure of the ketal that results from the reaction of excess benzyl alcohol and acetophenone.
- 4) Provide the structure of the products that result when the molecules below are hydrolyzed in aqueous acid:



CHM 3343

Homework Set 6

TUD Department of Chemistry

Spring 2017

Page 4 of 4

5) What is it?

PROBLEM 22

MW 177

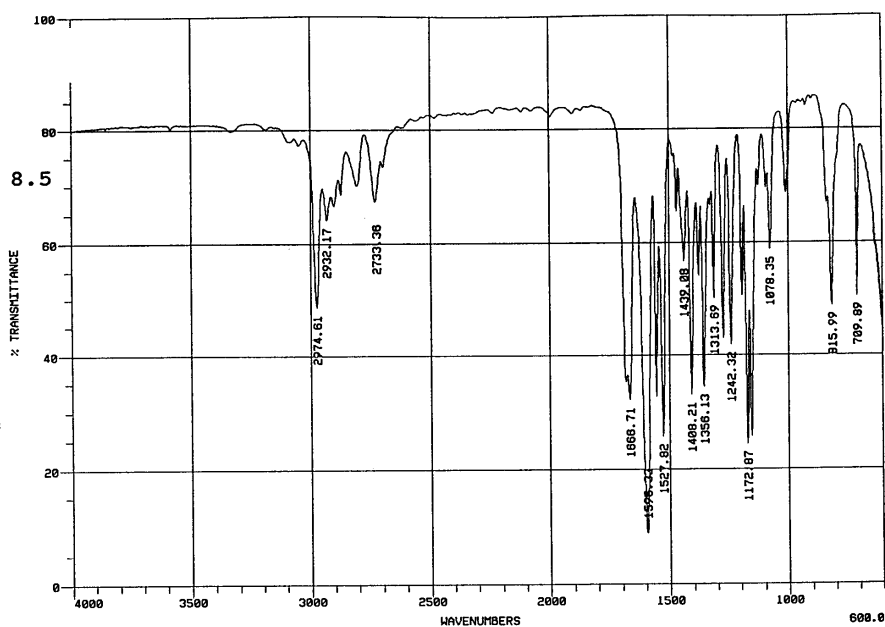
%C 74.6 %H 8.5

%N 7.9

[120-21-8]

Mass Spec. Data

m/z	relative abund.
134	24
162	100
163	10
177	43



© 1994

