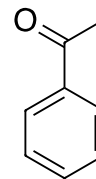


A Mystery Reaction

In a 50 mL Erlenmeyer flask, place 15 mL of Clorox bleach and several drops of 3 M NaOH. Add 20 drops of acetophenone, swirl to mix and heat on a hotplate in the hood to just below boiling, then turn the hotplate off and allow the solution to remain for 10 minutes. Continue to swirl frequently. Cautiously add 20 drops of acetone to the mixture and heat to boiling. Remove the flask from the hot plate and very cautiously add concentrated HCl dropwise until the pH is <3. Heat to dissolve the solid that formed and then cool slowly to room temperature and then in an ice bath. Collect the solid by suction filtration and wash it repeatedly on the filter with ice cold water.

Now the hard part. Identify the solid.



Acetophenone